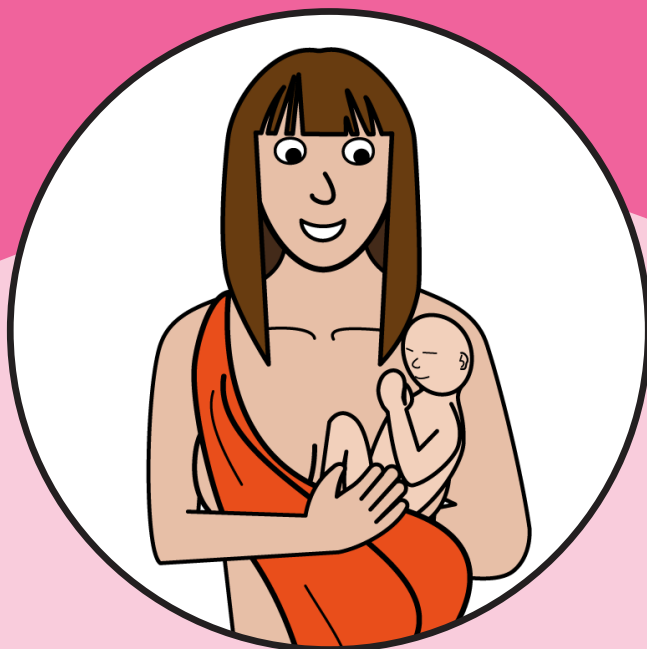


How will my baby be born?

Information for patients



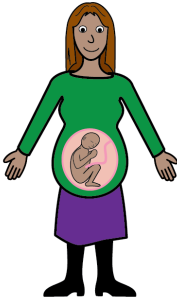
easy read



This booklet uses easy words and pictures.

You may need someone to help you understand it.

pregnant



When you are pregnant you need to think about how your baby will be born.

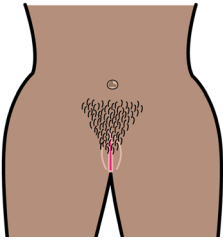


There are different ways babies can be born.

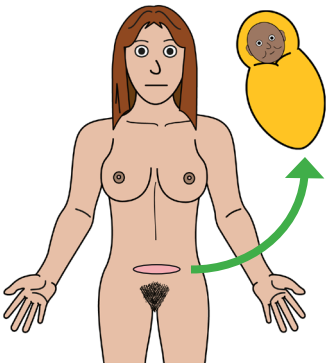
birth



vagina



Vaginally - this is when the babies comes out of your vagina.



Or by Caesarean - this is when the baby comes out of a cut low down in your tummy.

hospital



A Caesarean is an operation that is always done in hospital.

birth partner



You can have someone with you to support you when you are birthing your baby.

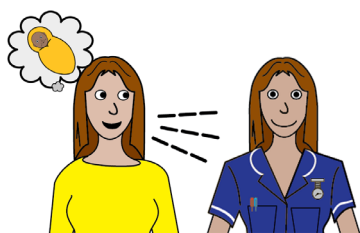
Sometimes they are called a birth partner.

midwife



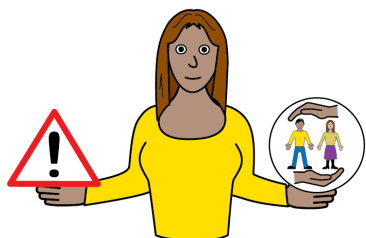
You will also have a midwife with you.

talk to



Before your baby is born you will be able to talk to your midwife about the different options for you to birth your baby.

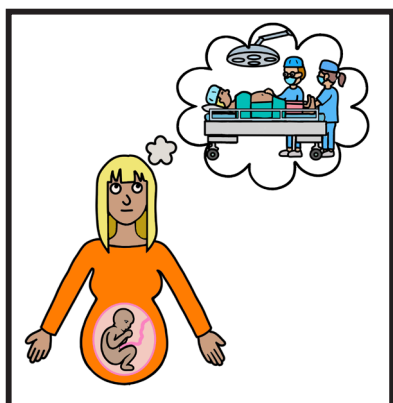
risk



You will talk about the risks and benefits of the different options.



Some people worry
that a vaginal birth
is painful.

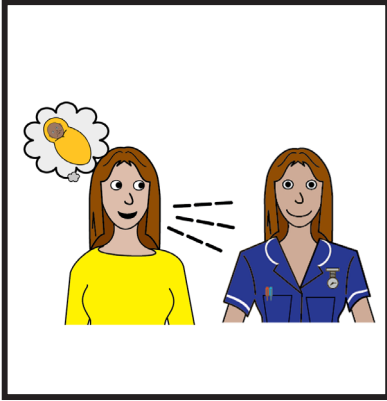


Some people worry
about a Caesarean
being an operation.



i may not like

You can talk through
your worries with your
midwife.



There may also be medical reasons why one way to birth your baby is chosen over another.

You midwife or doctor will discuss this with you.



birth plan

You can write your thoughts down in your personalised care plan.

Your midwife can help you with this.



friendly staff

Please ask any staff if you need any help or support.



If you have a Learning Disability or Autism diagnosis please complete a Health Passport and return it to the Learning Disability and Autism team on: leedsth-tr.lautism@nhs.net

For more information please go to www.necldnetwork.co.uk/work-programmes/health-inequalities/maternity/

 @necldnetwork

 england.learningdisabilitynetwork@nhs.net

This leaflet has been co-developed by Leeds Teaching Hospitals NHS Trusts which has kindly been shared so it can be adopted by the North East & North Cumbria.

NHS
The Leeds Teaching Hospitals
NHS Trust

© The Leeds Teaching Hospitals NHS Trust • 1st edition Ver 1.0
Developed by: Laura Walton, Deputy Head of Midwifery
All images / Resources Copyright © LYPFT easyonthei
Produced by: Medical Illustration Services • MID code: M20221205_009/NR

LN005507
Publication date
01/2023
Review date
01/2026